

Onshore Bangladesh

**2D SEISMIC DATA EXAMPLES**

# Original side label with Processing Sequence

LINE PK 3  
PG 136 - 394

12FOLD STACK/TV DECONVOLUTION/TV FILTERING

**FIELD DATA**

CONTRACTOR: PRAXIA-SEISMOS  
FIELD PARTY: F. KOCH  
CONTRACT NO: 781 004 1  
DATE OF RECORDING: 17.5.1978  
SUBSURFACE COVERAGE: 12FOLD  
FIELD SYSTEM: SERCEL 338 B  
TAPE FORMAT: TIAC-SERCEL  
RECORD LENGTH: 5 S. SAMPLING RATE: 4 MS  
FILTER: LOWCUT OUT  
HIGHCUT: 62.5 CPS. 72 DB/OCT.

GAIN CONTROL: 1FP. 30 DB  
POLARITY: COMPRESSIONAL EVENTS = POSITIVE NUMBERS  
CABLE: TYPE

RECEIVER: TYPE: SM 4 MARCH  
NO OF GROUPS: 48. SPACING: 55 M  
GROUP LENGTH: 80 M  
RECEIVERS PER GROUP: 24

RECEIVER ARRAY:  
40 33 24 17 11 5 M PG. CENTER  
1 M  
28 20 14 9 4 1 M  
80 M

EMITTER ARRAY:  
PG SE PG  
=====X===== + SURFACE  
1 DETONATOR : : 12 M DEPTH  
1 PRIMER : :  
9 SEISMEX : :  
+-----55 M-----+

ENERGY SOURCE: DYNAMITE (SEISMEX PRIMER)  
DEPTH: 12M. CHARGE: 2 X 10 LBS

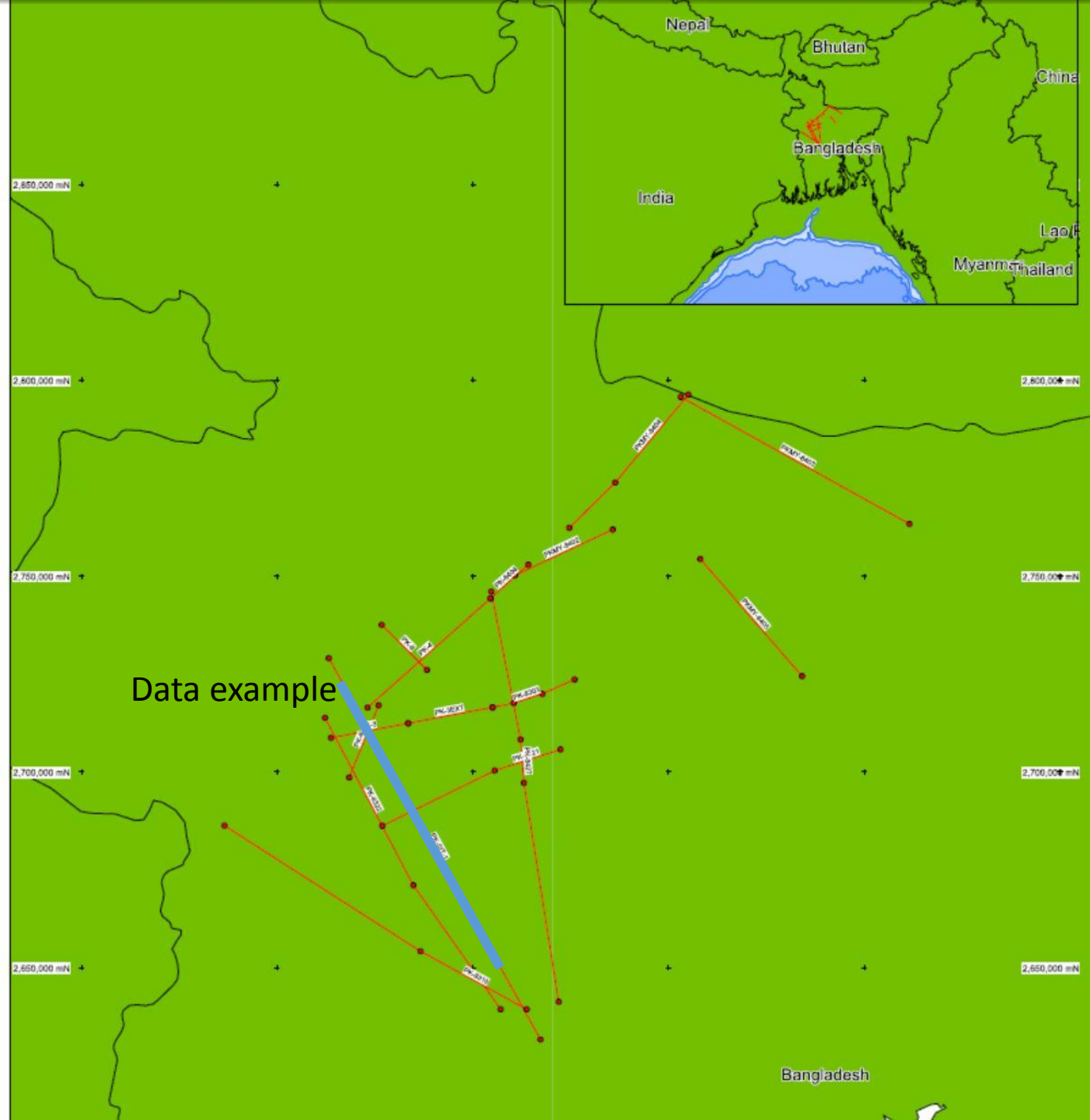
EMITTER RECEIVER CONFIGURATION:  
DIRECTION  
W-----E  
PG 101 (113) 148 160.5  
+ 47.55M+2585M + 687.5M+  
1 CHANNEL 48 SP  
+-----3272.5M-----+

**DATA PROCESSING**

- 1 INPUT TAPE FORMAT: TIAC SERCEL  
SAMPLING RATE: 4 MS. 48 TRACES  
RECORD LENGTH: 5 S
- 2 GAIN REMOVAL
- 3 AMPLITUDE CORRECTIONS FOR SPHERICAL DIVERGENCE
- 4 FREQUENCY FILTER: LINEAR INTERPOLATED  
TRAVEL TIME LOWCUT HIGHCUT  
S CPS DB/OCT CPS DB/OCT  
0-5.0 12 24 72 24
- 5 DECONVOLUTION: TYPE: SPIKE  
1 GATE: LENGTH 2400 MS FROM 600/1600 TO 3000 MS  
OPERATOR LENGTH: 160 MS
- 6 STATIC CORRECTIONS TO DATUM LEVEL: -20 M ASL  
CORRECTION VELOCITIES: 1600 M/S
- 7 RESIDUAL CORRECTIONS
- 8 DYNAMIC CORRECTIONS DERIVED FROM VELOCITY CHECK
- 9 NORMALIZATION
- 10 STACKING: 12FOLD
- 11 DECONVOLUTION TYPE: PREDICTION  
TIME VARIANT: 2 GATES  
PG 137  
GATE 1: LENGTH 500 MS FROM 1000 MS TO 1500 MS  
GATE 2: LENGTH 700 MS FROM 1400 MS TO 2100 MS  
PG 394  
GATE 1: LENGTH 500 MS FROM 1160 MS TO 1660 MS  
GATE 2: LENGTH 1000 MS FROM 1560 MS TO 2560 MS  
OPERATOR LENGTH: 320 MS  
PREDICTION INTERVAL: 16 MS
- 12 FREQUENCY FILTERING  
TIME VARIANT: 2 GATES  
TRAVEL TIME LOWCUT HIGHCUT  
PG 137 MS MS CPS DB/OCT CPS DB/OCT  
GATE 1: 0-1480 18 24 55 24  
GATE 2: 1680-5000 14 24 40 24  
PG 394  
GATE 1: 0-1660 18 24 55 24  
GATE 2: 1860-5000 14 24 40 24
- 13 NORMALIZATION
- 14 DISPLAY  
SCALE: 1:55000, 1 S = 4.55CM  
TRACE SPACING: 1.1 MM  
POLARITY: POSITIVE NUMBERS = WHITE

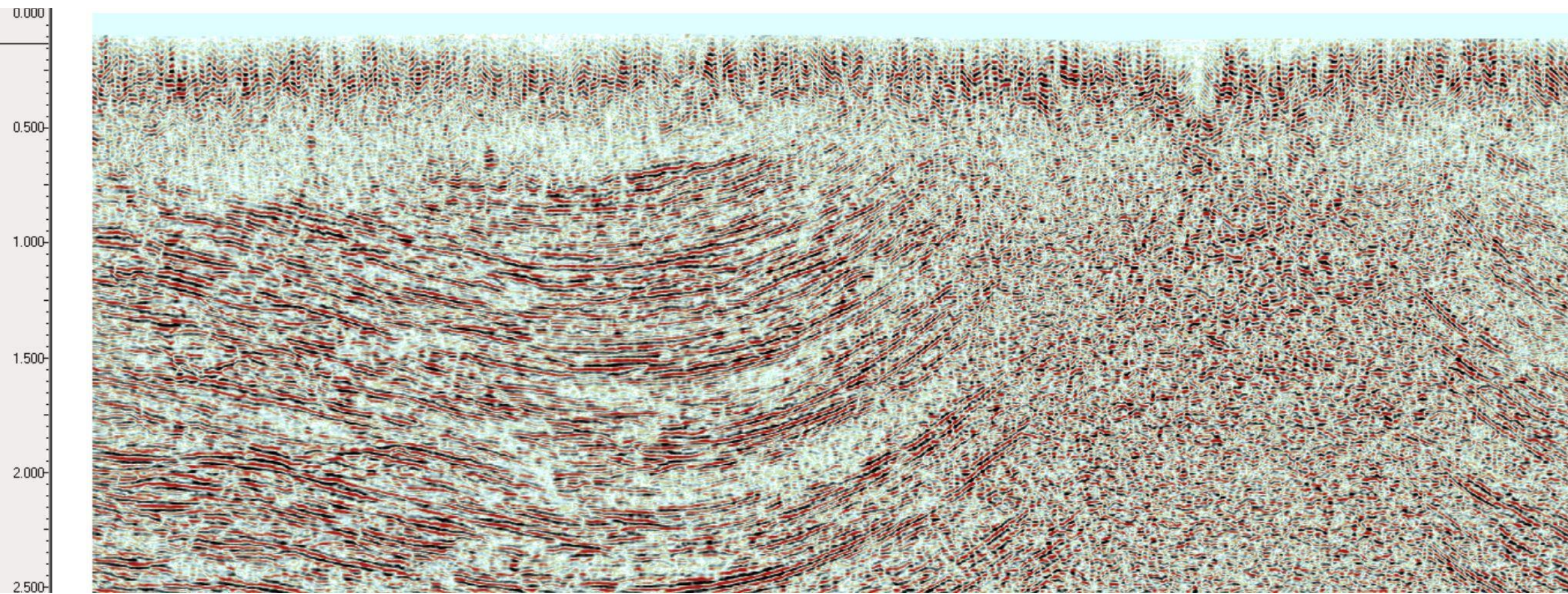
\*1701/06 DATE: JUNE 16TH 1978 CURRENT NO: 3920

INPUT CREW: HENKEL  
SUPERVISOR: BOEHMERT

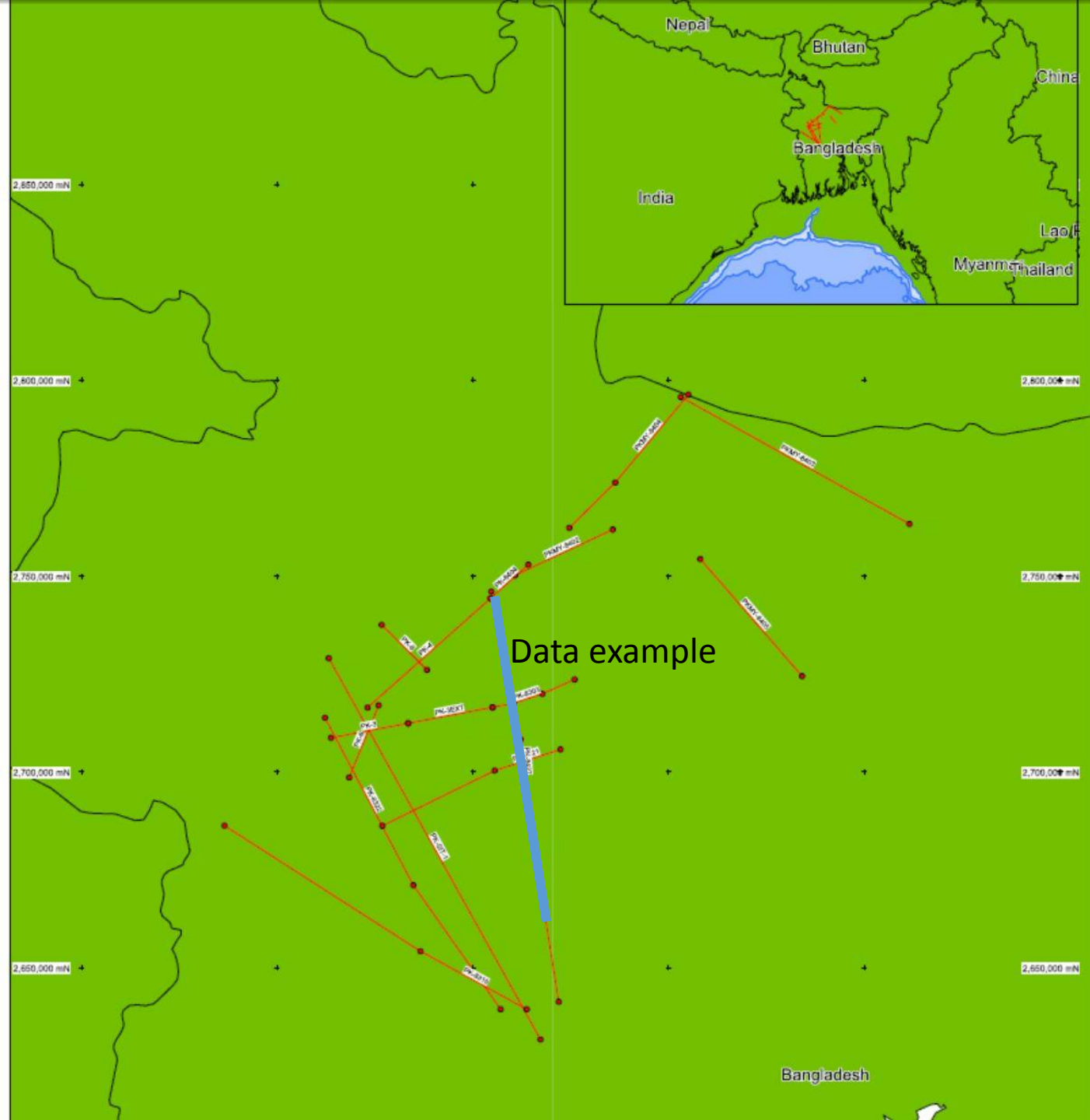




# Data Example









# Data Example

